

# Complete solutions ready for connection

## SERAC® XH

The slimline design largely corresponds to a hydraulic cylinder, so that the construction cost of conversion to an electric drive is low in many cases. In this series the motor shaft is rod style. So superior dynamic performance is achieved.



SERAC® XH5 and XH12  
Stroke length up to 250 mm  
Maximum axial force 4.5 kN to 12 kN  
Max. speed 300 mm/s  
More from page 22

## SERAC® KH

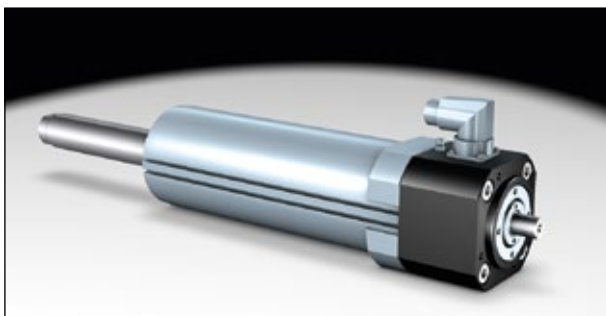
High-rigidity construction with stable anti-rotate-device in a compact housing. Front and side mounting options for customized installation.



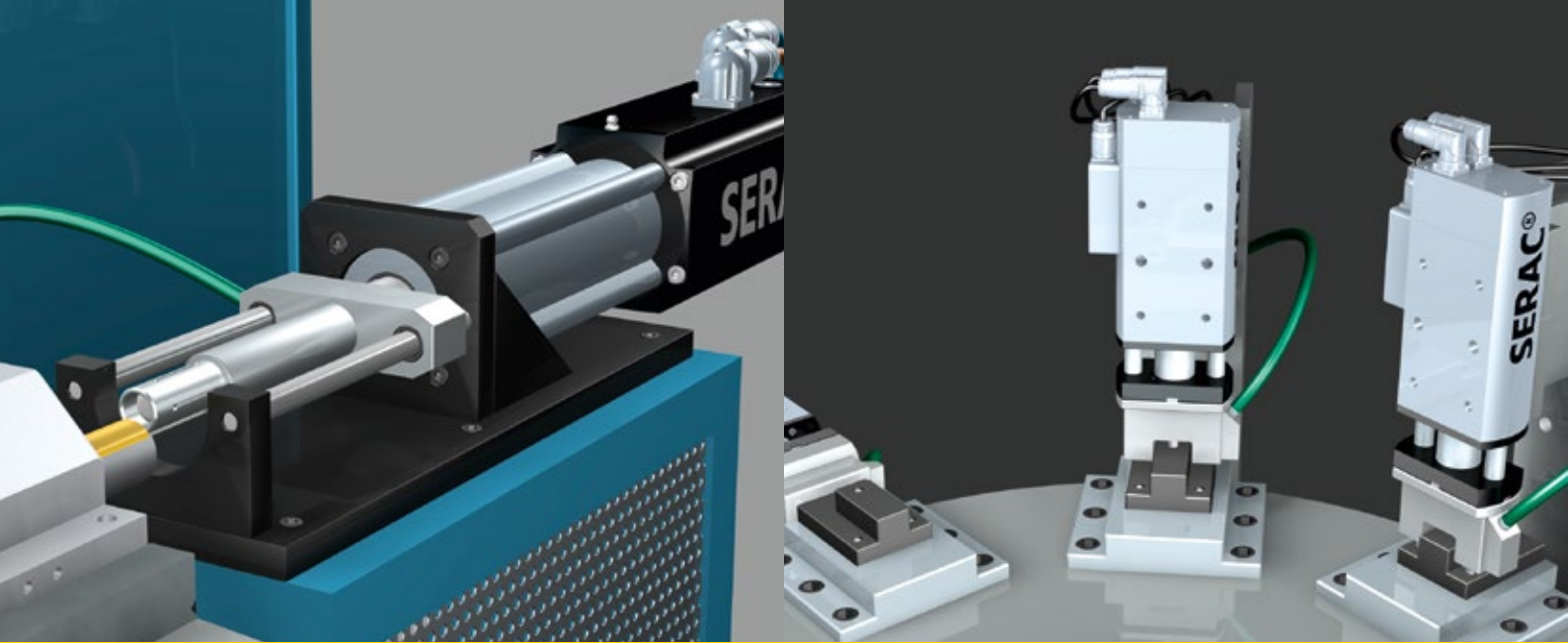
SERAC® KH5 to KH30  
Stroke length up to 90 mm  
Maximum axial/radial force  $\pm 4.5$  kN to  $\pm 30$  kN  
Max. speed 320 mm/s  
More from page 30

## SERAC® XHM

The system technology of this screw unit, which comes with an integrated guide, is the same as for the SERAC® XH electric cylinder. Designed to fit any servo motor.



SERAC® XHM12  
Stroke length up to 250 mm  
Max. speed 300 mm/s  
More from page 26



## SERAC® LH

A fully modular structure characterises the LH series. The design with hollow shaft motor and directly driven screw nut allows long strokes to be obtained in this ultra compact electric cylinder.



SERAC® LH30 / LH50 / LH100  
 Stroke length up to 330 mm  
 Maximum axial force 30 kN to 100 kN  
 Max. speed 425 mm/s  
 More from page 34

## ServoOne

The servo controls should preferably be high-performance controllers from LTI, but it is also possible to use controllers of your choice for the drive control.



ServoOne servo controller  
 With DriveManager 5 PC user software  
 More from page 40